



P.O. Box 360, 14935 U.S. Highway 36, Norton, KS 67654  
785-877-3323 or 800-577-3323  
www.prairielandelectric.com

PRAIRIE LAND  
ELECTRIC COOPERATIVE

# NEWS

## PRAIRIE LAND ELECTRIC COOPERATIVE, INC.

### BOARD OF TRUSTEES

**Mike Rogers**  
President

**Keith Ross**  
Vice President

**Sandy Benoit**  
Secretary

**Robert Paxson**  
Treasurer

**Ivan Bohl**  
Trustee

**Ronald Griffith**  
Trustee

**Otto Levin**  
Trustee

**William Peterson**  
Trustee

**Lowell Thoman**  
Trustee

**Scott Urban**  
Trustee

**Eric Witmer**  
Trustee

### STAFF

**Kirk Girard**  
CEO

## POWER LINE ISSUES

Call 800-577-3323 to report outages and other power line issues.

**POWER**  
*to make life better*

## FROM THE CEO

# Recent Review of EPA Rules Signals Reliability Wins

In our July 2024 issue, we shared concerns about the Environmental Protection Agency's (EPA) proposed rules targeting power plants and how these measures could affect electric reliability and affordability. We're now pleased to provide a positive update: electric cooperatives — including Prairie Land Electric — are encouraged by a series of actions announced by the EPA, as these latest developments could help ease some of the cost and reliability pressures for co-ops like ours and the members we serve.

The EPA said it will review and reconsider the Biden administration's power plant greenhouse gas rule. This rule, as proposed, would constrain

existing coal and new natural gas power plants by requiring them to install carbon capture and storage technology that is not yet reliable or commercially available. Electric cooperatives and other utilities have expressed concerns that the rule could lead to early closures of reliable power sources and increase the risk of electric grid instability — especially as electricity demand continues to rise.

The EPA also plans to reconsider other rules hindering America's energy strength, including the mercury and

*Continued on page 12D ►*



Kirk Girard

## NOTICE OF RATE MEETING | SEPT. 23, 2025

The Board of Trustees of Prairie Land Electric Cooperative, Inc., will meet on **TUESDAY, SEPT. 23, 2025, AT 1 P.M.** at the cooperative's Norton office located at 14935 U.S. Highway 36.

**THE PURPOSE OF THE MEETING WILL BE TO DISCUSS AND VOTE UPON THE PROPOSED TARIFF REVISIONS FOR THE NET METERING AND PARALLEL GENERATION RIDERS FOR THE DISTRIBUTED ENERGY SERVICES RELATED TO RECENT CHANGES IN STATE STATUTE, AS WELL AS UPDATES TO THE RENEWABLE ENERGY PROGRAM RIDER RELATED TO RESIDENTIAL COMMUNITY SOLAR.**

This meeting is open to any member who wishes to attend.

Members have the right under K.S.A. 66-104d(g) to request Kansas Corporation Commission review of any rate change. If you have questions, please call Prairie Land at 785-877-3323 or 800-577-3323.



# Prairie Land Sends Baker and Pochop on Trip to Washington, D.C.

**CALYN BAKER**, Clifton-Clyde Senior High School, and **GABRIELLE POCHOP**, Cheylin High School, recently represented Prairie Land Electric Cooperative at the 2025 Electric Cooperative Youth Tour in Washington, D.C., held June 14-20. During their time in Washington, D.C., students deepened their understanding of America's electric cooperatives and developed their leadership skills while connecting with peers from across the cooperative network.

Students from all around the nation participated, sponsored by their local cooperatives. Kansas and Hawaii participants were paired together. These 31 standout student representatives, 27 from Kansas and four from Hawaii, were hand-selected through a competitive process that began with an application. Candidates then completed study materials, including a cooperative knowledge test and an essay on the meaning of leadership, before advancing to interviews.

The Youth Tour kicked off in Topeka with a welcome dinner and icebreaker activities, followed by an exclusive night tour of the Kansas State Capitol led by State Treasurer Steven Johnson and Kansas Representative Kyle Hoffman, alumni of the Youth Tour program.

In Washington, D.C., students explored iconic landmarks including the U.S. Capitol, Arlington National Cemetery, and



Calyn Baker (left) and Gabrielle Pochop recently represented Prairie Land Electric Cooperative at the 2025 Electric Cooperative Youth Tour in Washington, D.C., held June 14-20.



The People's House — A White House Experience, along with numerous monuments and memorials. Visits to the Holocaust Memorial Museum and the Smithsonian museums offered powerful insights into history and culture.

On June 19, during the National Rural Electric Cooperative Association's (NRECA) National Youth Day, students were inspired by a dynamic lineup of speakers, including NRECA CEO Jim Matheson, Olympic medalist Mike Schlappi, and Maggie Martin, the 2025 National Youth Leadership Council spokesperson.

In addition to the Youth Day program, the Kansas and Hawaii delegations joined peers from Colorado and Wyoming for an engaging leadership workshop led by nationally recognized youth leadership expert Craig Hillier.

Kansas delegates pose in front of the White House during the 2025 Electric Cooperative Youth Tour.



Calyn Baker (left) and Gabrielle Pochop pose during a tour of the Kansas State Capitol.



A group of Kansas delegates pose in front of the "Kansas" portion of the World War II memorial in Washington, D.C.

"Listening to the different speakers has impacted me most because learning about their experiences as leaders gave me a new perspective on how to be a leader," Pochop said. "I will use their advice in future situations and will forever be grateful for the lessons I've learned from them."

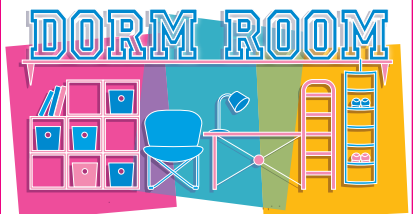
Students also had the unique opportunity to meet with U.S. Senator Roger Marshall and Jason Morganti, a legislative assistant for Congressman Ron Estes. During these discussions, they asked thoughtful questions on a range of topics that mattered to them, gaining firsthand insight into the legislative process and the role of elected officials.

Beyond the educational experiences, students enjoyed unique opportunities

to bond with peers from across the country — trading pins with other state delegations and taking in the sights during a scenic dinner cruise on the Potomac River.

"The memories I have made on this trip are countless!" Baker said. "I have made amazing friends that I will cherish forever. I will always have the memories of seeing the coolest landmarks, learning about our country, and especially the little and big moments with my new friends."

Students who participated in the 2025 Youth Tour are also eligible to apply for the NRECA Glenn English Scholarship. For more information about the Youth Tour or other youth programs, please contact Stepheni Peltier at [speltier@ple.coop](mailto:speltier@ple.coop).



## ELECTRICAL SAFETY: Tips for a Safe Semester

Be smart and stay safe. Share these tips with your campus-bound students.

### DON'T OVERLOAD OUTLETS

Too much power draw = fire risk.

**TIP: PLUG DORM ROOM FRIDGE DIRECTLY INTO WALL OUTLET.**

### DECORATE SAFELY

Don't use nails or tacks to secure cords or light strands.

**TIP: USE PLASTIC HOOKS TO HANG STRING LIGHTS.**

### NEVER USE DAMAGED CORDS

Frayed or cracked cords can spark a fire.

**TIP: IF A CORD LOOKS WORN, REPLACE IT — DON'T TAPE IT!**

### REPORT ELECTRICAL ISSUES FAST

Flickering lights? Warm outlets?

**TIP: TELL CAMPUS MAINTENANCE ASAP; DON'T WAIT.**

### UNPLUG WHEN NOT IN USE

Even when off, devices can still draw power or overheat.

**TIP: UNPLUG FANS, CHARGERS AND APPLIANCES WHEN YOU'RE OUT.**

### NEVER CHARGE A PHONE UNDER PILLOWS OR BEDDING

It could overheat or catch fire.

**TIP: CREATE A DEDICATED CHARGING STATION IN YOUR ROOM.**

### KEEP CORDS COOL & CLEAR

Don't run cords under rugs, beds or doorways.

**TIP: KEEP CORDS VISIBLE TO AVOID OVERHEATING.**





## EMPLOYEE SPOTLIGHT

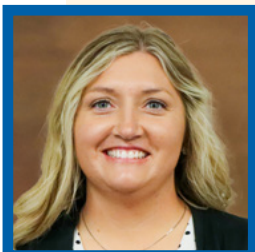
### MARK WARD



Mark Ward

**MARK WARD** is the new cybersecurity specialist at Prairie Land beginning in May. He is a Norcatur local and recently returned to the area with his wife, Deb. In his free time, Mark enjoys shooting, amateur radio and playing the piano. He's glad to be back in his hometown and looks forward to his work at Prairie Land.

### TIFFANY GREEN



Tiffany Green

**TIFFANY GREEN** is a member services representative who joined Prairie Land in May. She is a proud native of Norton, where she lives with her husband, Josh, and their three sons — Parker, Carter and Koyer. Tiffany enjoys fishing, attending sporting events and cheering on Carter at his go-kart races. She also helps care for the family's farm animals and enjoys the pace of rural life.

## Recent Review of EPA Rules Signals Reliability Wins

*Continued from page 12A ▶*

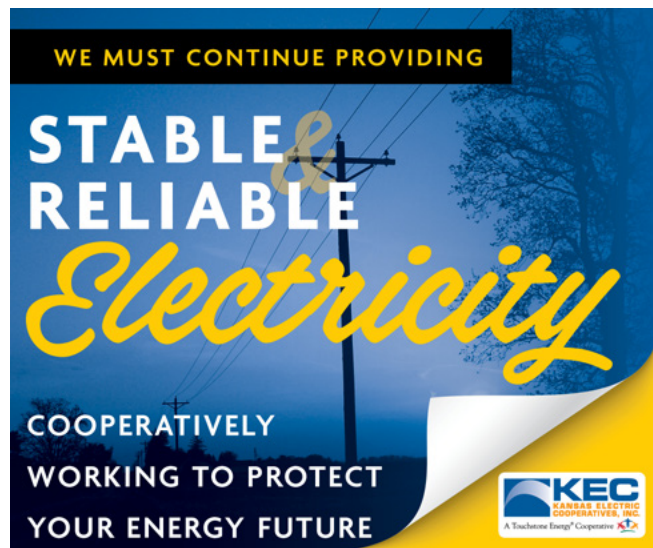
air rule, ozone transport rule, and power plant wastewater rule. The agency will further address ongoing issues with the coal ash program and take other steps to strengthen domestic energy production while protecting the environment.

The National Rural Electric Cooperative Association (NRECA), which represents electric cooperatives like Prairie Land in Washington, D.C., outlined these concerns in a letter to EPA Administrator Lee Zeldin in January. NRECA CEO Jim Matheson met with Zeldin to further discuss how these rules could impact electric co-ops and the communities we serve. The letter offered a policy road map to address regulatory challenges while still protecting the environment and keeping power affordable and reliable.

These recent EPA announcements are a critical step toward a more resilient electric grid — and not a moment too

soon. Demand for electricity is rapidly growing, driven by the expansion of data centers and increasing electrification across multiple sectors, yet unrealistic public policy decisions are forcing dependable generation sources to retire faster than they can be reliably replaced.

Electric cooperatives like Prairie Land Electric appreciate EPA's decision to revisit these rules. Sound energy policy must balance environmental protection with the need to keep the lights on and ensuring service remains affordable — and that's exactly what our members count on us to deliver.



## LABOR Day Office Closing

In observance of Labor Day, our office will be closed on **MONDAY, SEPT. 1.**



## Change of Business Hours

Effective **Aug. 1, 2025**, Prairie Land's business hours will be Monday through Friday, **8 a.m. to 4:30 p.m.**

For after-hours support, including outage reporting or making a payment, members can continue to reach us at 800-577-3323.

If you have any questions, please don't hesitate to call us at 800-577-3323.

Thank you for your continued support!

